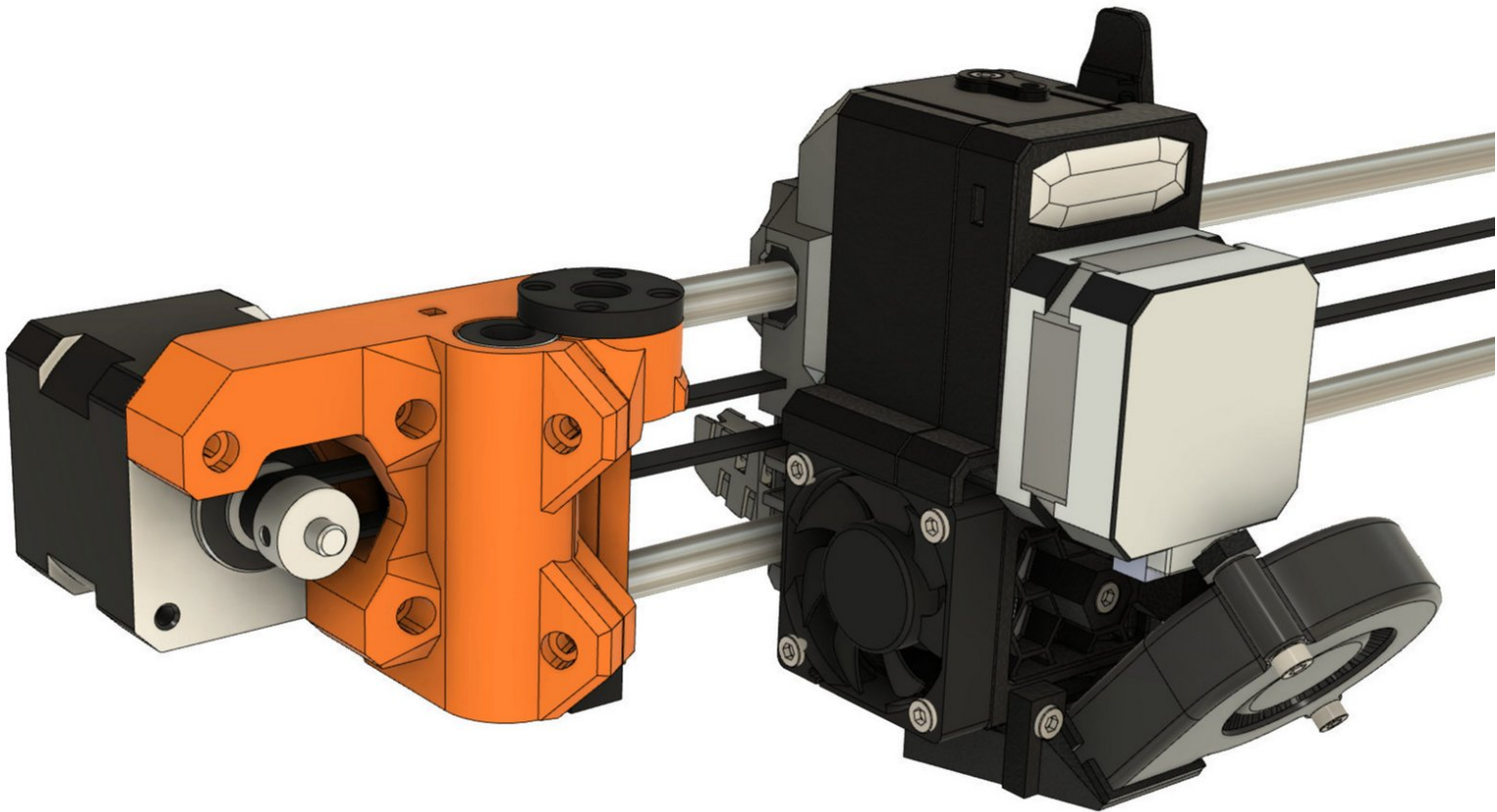


Bear Lab

Assembly Guide

Assembly guide for Bear X axis and carriage for Bondtech Prusa upgrade extruder

Written By: Grégoire Saunier



Step 1 — Bondtech extruder assembly



- Follow the [Bondtech Prusa i3 MK*** Upgrade Kit - Installation](#) guide to assemble the Bondtech extruder body.

Step 2 — Preflight check and disassembly



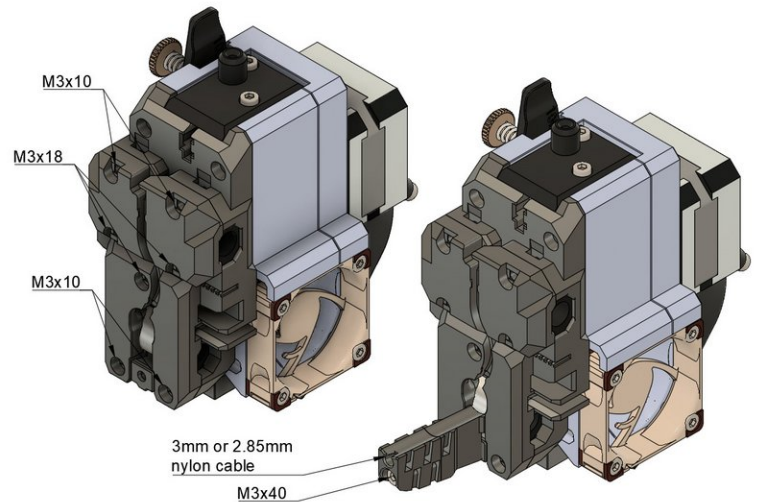
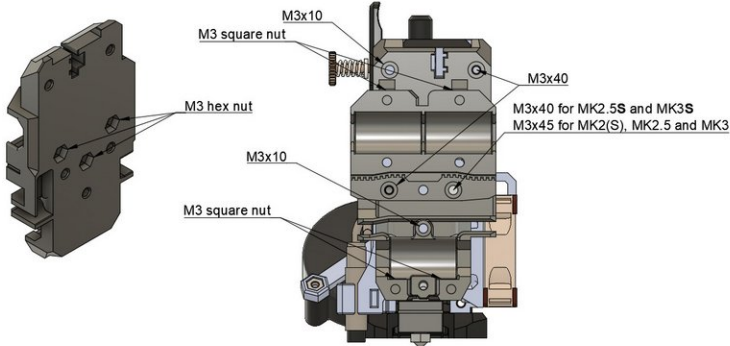
- Follow steps of Bear extruder assembly guide [1. Preflight check and disassembly](#)

Step 3 — Bear X axis



- Assemble the Bear X axis using the Bear extruder guide [2. X axis](#).

Step 4 — Bear X carriage



- Attach the Bear X carriage to the Bondtech extruder following the images.
- ❗ Your Bear X carriage as well as Bondtech extruder can be a little different than on those images but the positions and global shape is the same.

Step 5 — Bondtech and X axis assembly



- Assemble the Bondtech extruder on the Bear X axis using the Bear extruder guide [4. Extruder and X axis assembly](#).

Step 6 — Download firmware



- Download the latest firmware from the Bondtech site: <https://www.bondtech.se/en/knowledge-bas...>

Step 7 — Final adjustment, firmware and calibration



- Finalize the assembly with the Bear extruder guide [5. Final adjustments and calibration](#) using the firmware you have downloaded in the previous step.

Step 8 — Finished!



- Congratulations, you have finished to install and calibrate your Bondtech Prusa Upgrade extruder on Bear X axis.
- Happy printing :)